

## Preparing Internet Explorer for the eStores MarketPlace

Revised: March 1, 2007

### Steps

#### 1. Determine your browser version.

- a. Launch Internet Explorer.
- b. On the menu bar click **Help** and select **About Internet Explorer**.



- c. Note your **Version** number.

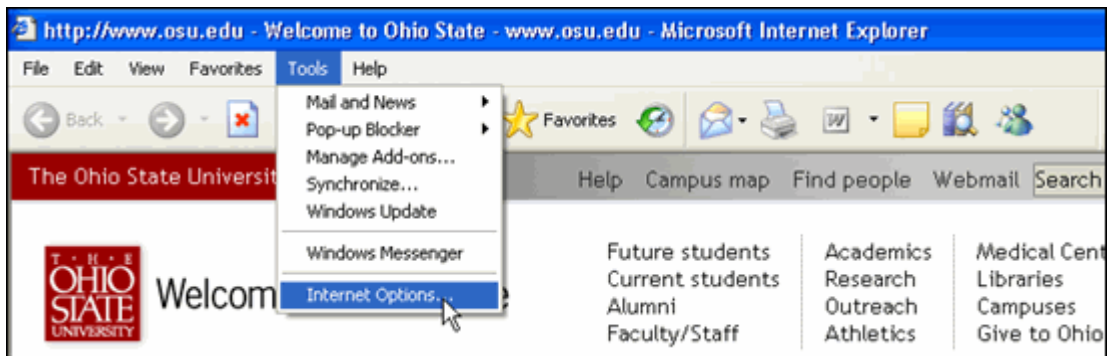


- d. Click .

**Note:** Steps 2 and 3 must be completed for both versions of Internet Explorer.

#### 2. Delete your Internet files.

- a. On the menu bar click the **Tools** menu and select **Internet Options...** from the menu.



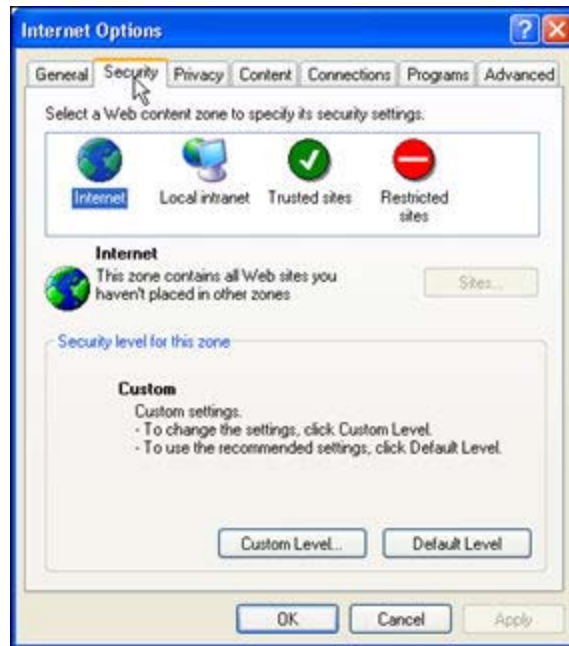
b. Click **Delete Files...** in **Internet Options**.



c. Leave **Internet Options** open for the next step.

### 3. Add the Kettera web site to your trusted sites.

a. Select the Security tab in **Internet Options**

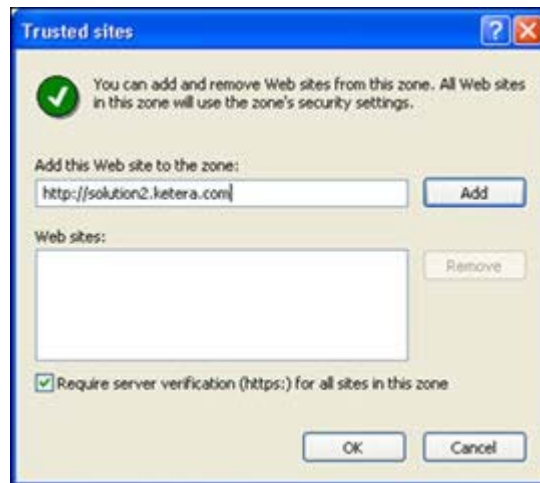


b. Click .

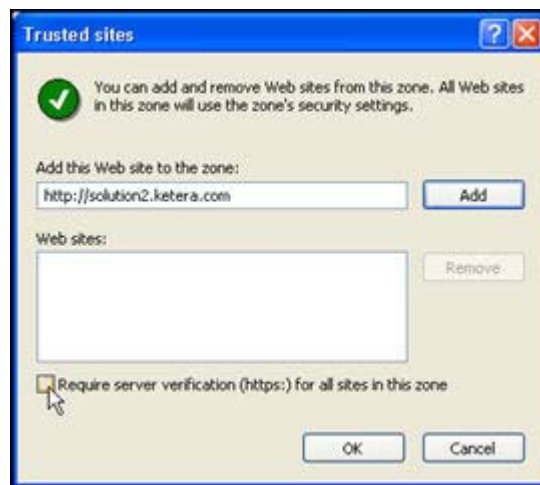


c. Click .

d. Type "http://solution2.ketera.com" in the **Add this Web site to the zone** field.

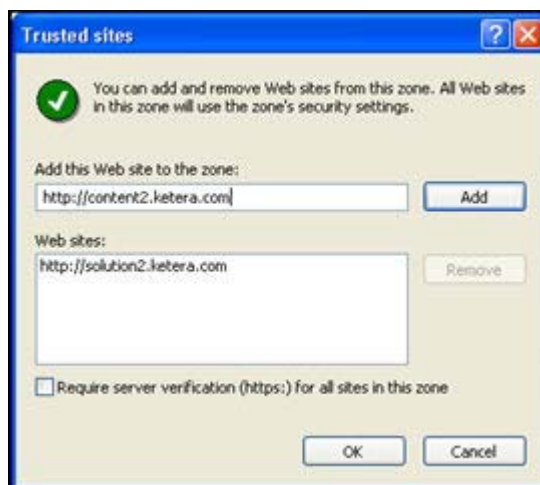


e. Click the **Require server verification (https:) for all sites in this zone** checkbox to clear it



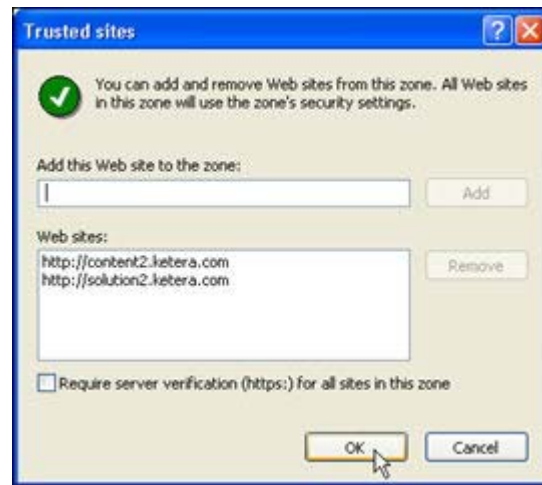
f. Click .

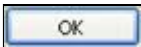
g. Type "http://content2.ketera.com" in the **Add this Web site to the zone** field.

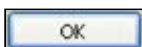


h. Click .

i. Verify that both sites are now visible in the **Web sites** field.




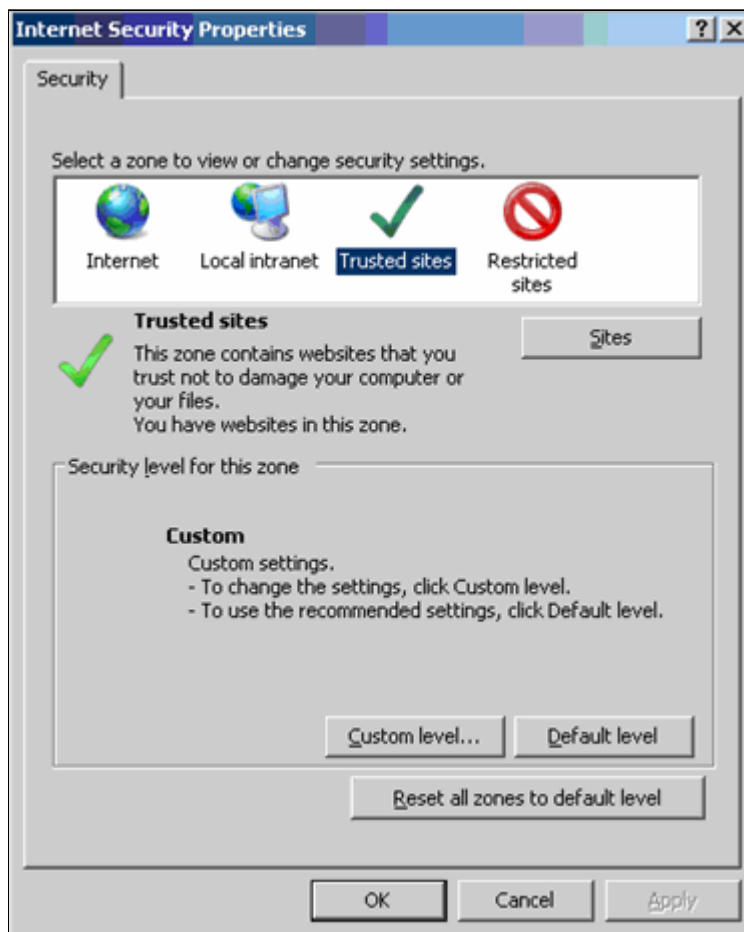
j. Click  to close the dialog box.

k. Click  to close **Internet Options**.

**Note: Complete Step 4 only if you are using Internet Explorer Version 7.0.**

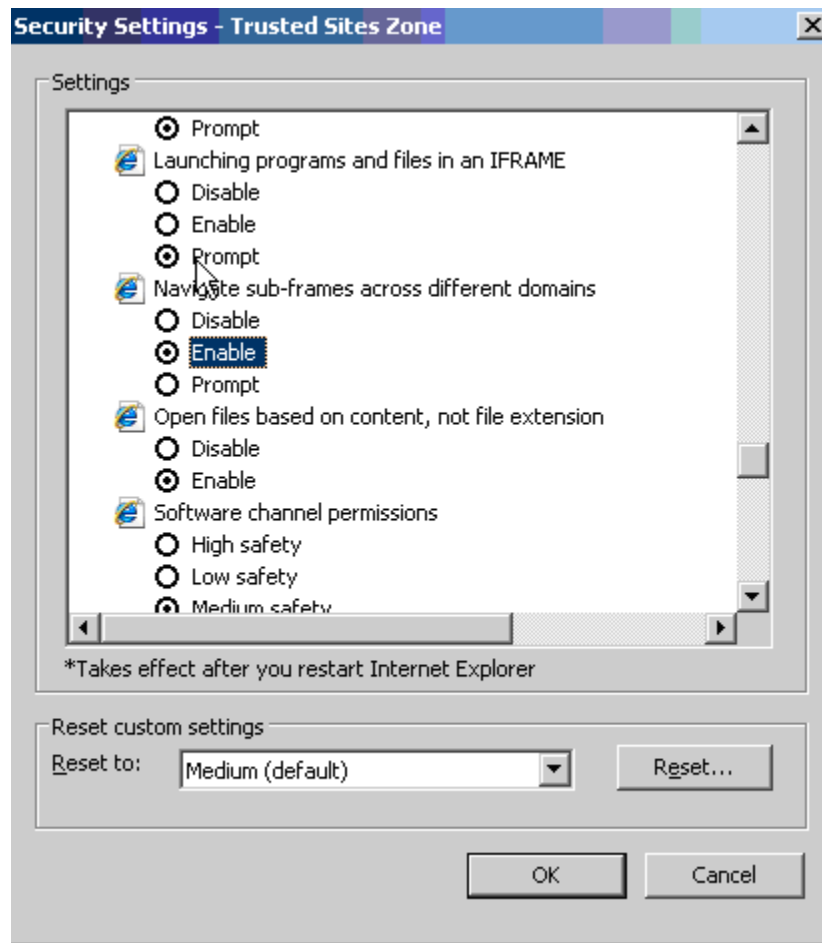
#### 4. Change the Custom Level security settings in Internet Explorer 7.0.

a. Double-click  at the bottom of your browser window to open **Internet Security Properties**.



b. Click  to open the **Security Settings - Trusted Sites** window.

- c. Scroll to **Navigate sub-frames across different domains**.
- d. Select **Enable**.



- e. Click .
- f. Click .
- g. Click .