

Preparing Internet Explorer for the eStores MarketPlace

Revised: March 1, 2007

Steps

1. Determine your browser version.

- a. Launch Internet Explorer.
- b. On the menu bar click **Help** and select **About Internet Explorer**.



- c. Note your **Version** number.

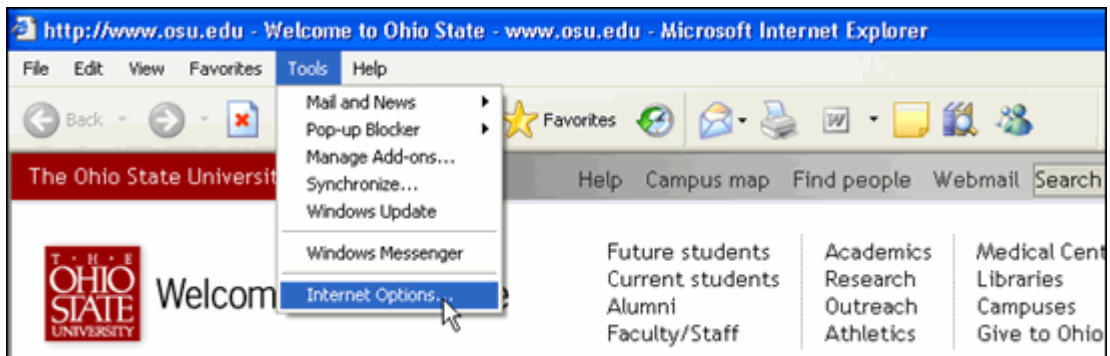


- d. Click .

Note: Steps 2 and 3 must be completed for both versions of Internet Explorer.

2. Delete your Internet files.

- a. On the menu bar click the **Tools** menu and select **Internet Options...** from the menu.



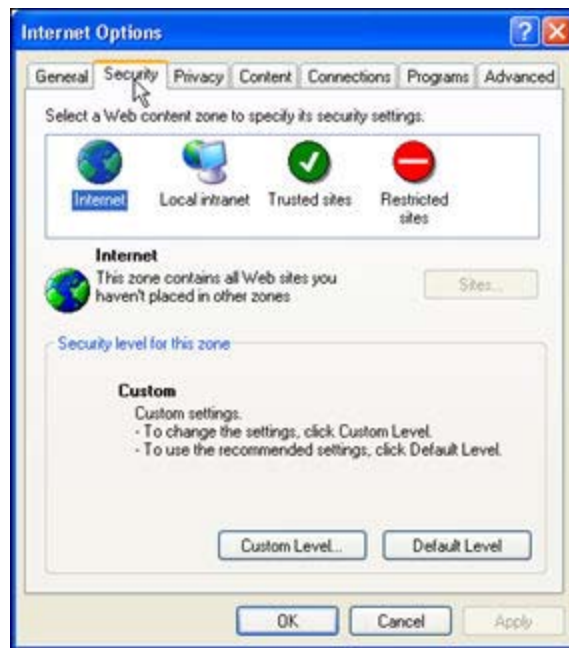
b. Click **Delete Files...** in **Internet Options**.



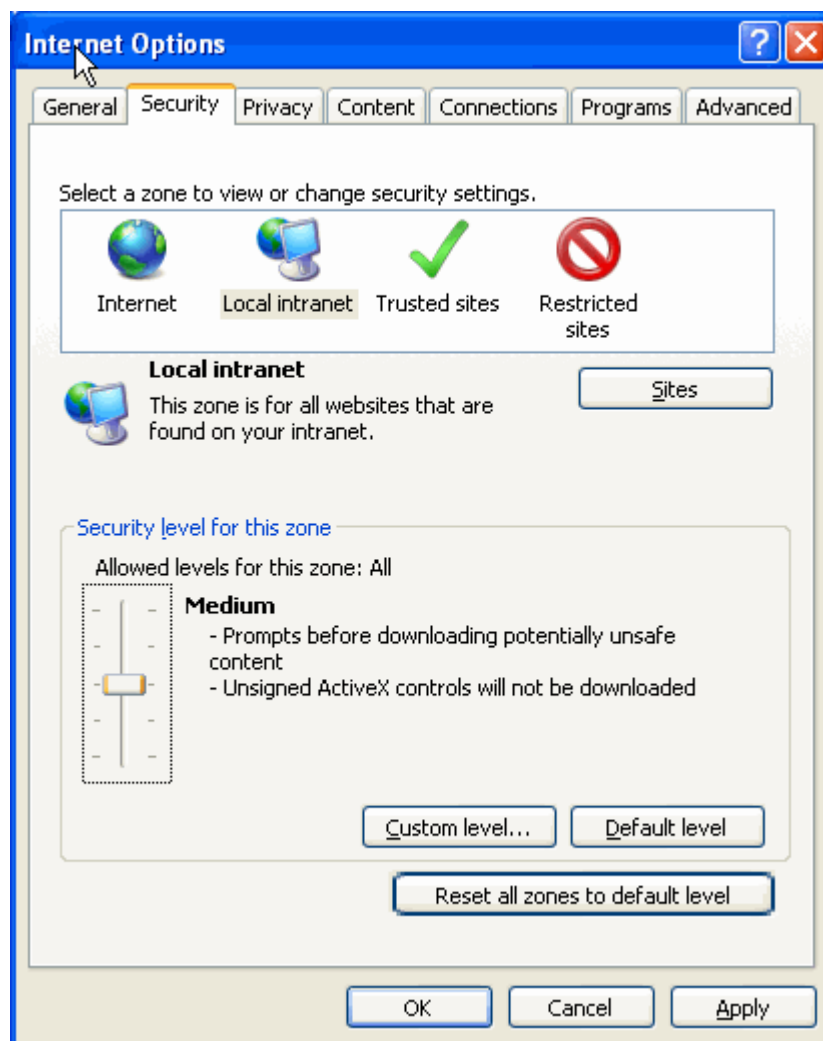
c. Leave **Internet Options** open for the next step.

3. Add the Kettera web site to your trusted sites.

a. Select the Security tab in **Internet Options**

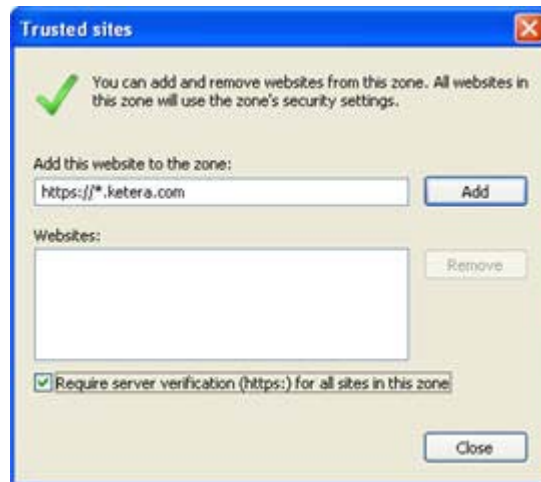


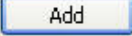
b. Click  Trusted sites.



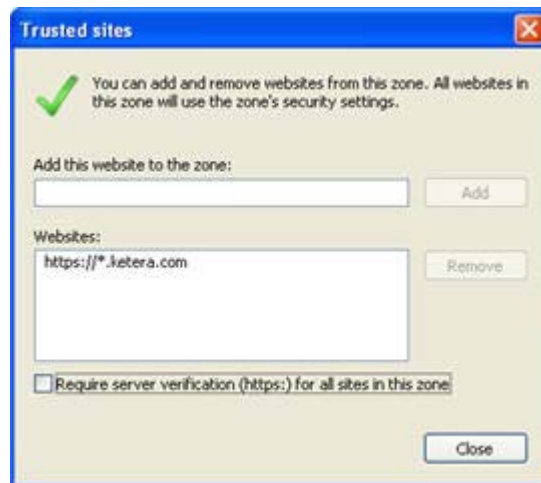
c. Click .

d. Type "https://*.ketera.com" in the **Add this Web site to the zone** field.



e. Click .

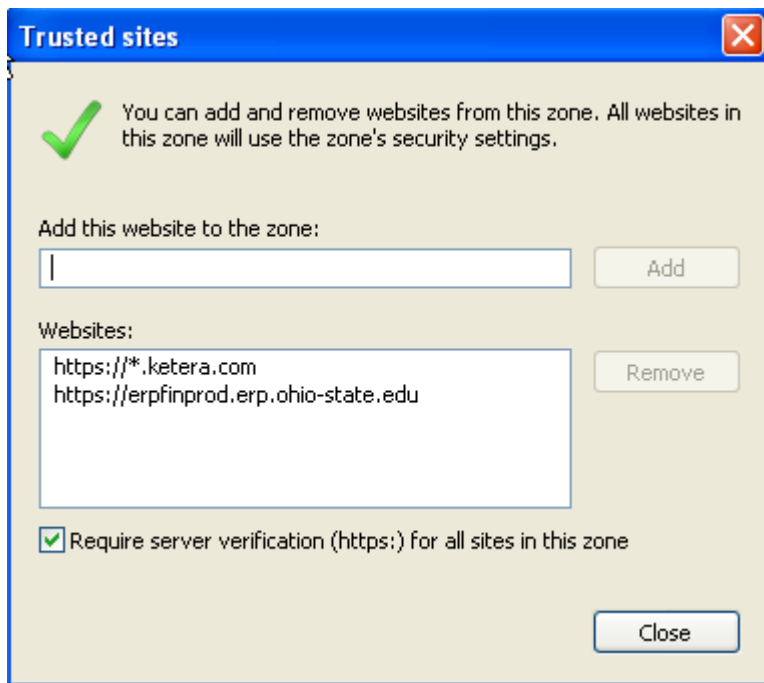
f. Verify that the site is now visible in the **Web sites** field.



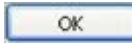
g. Type "https://erpfinprod.erp.ohio-state.edu" in the **Add this Web site to the zone** field.

h. Click .

i. Verify that the site is now visible in the **Web sites** field.




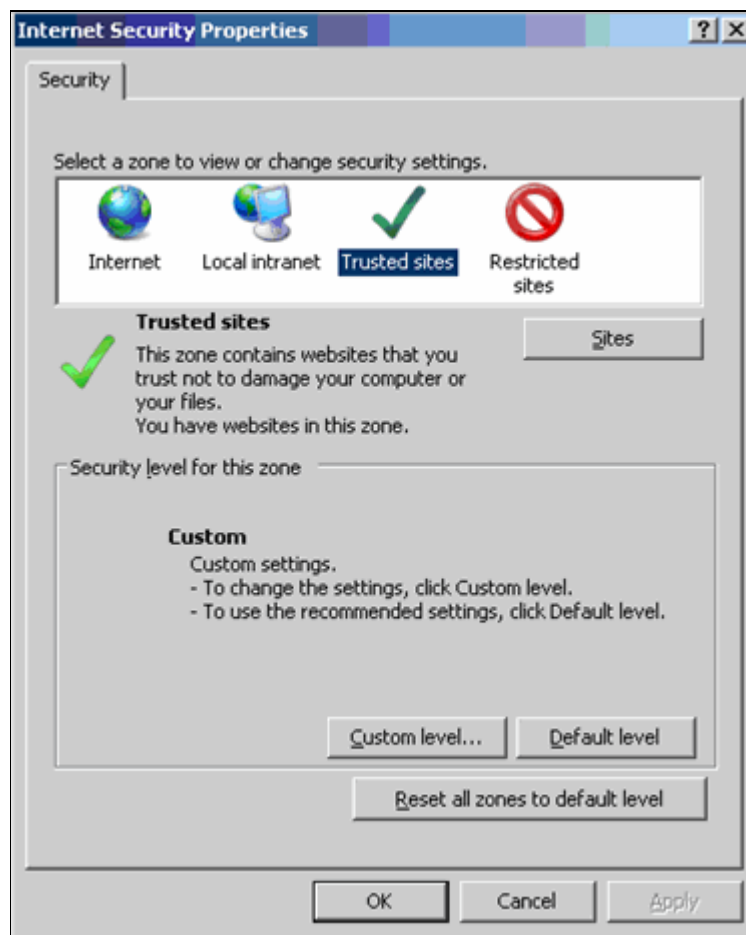
j. Click  or  to close the dialog box.


k. Click  to close **Internet Options**.

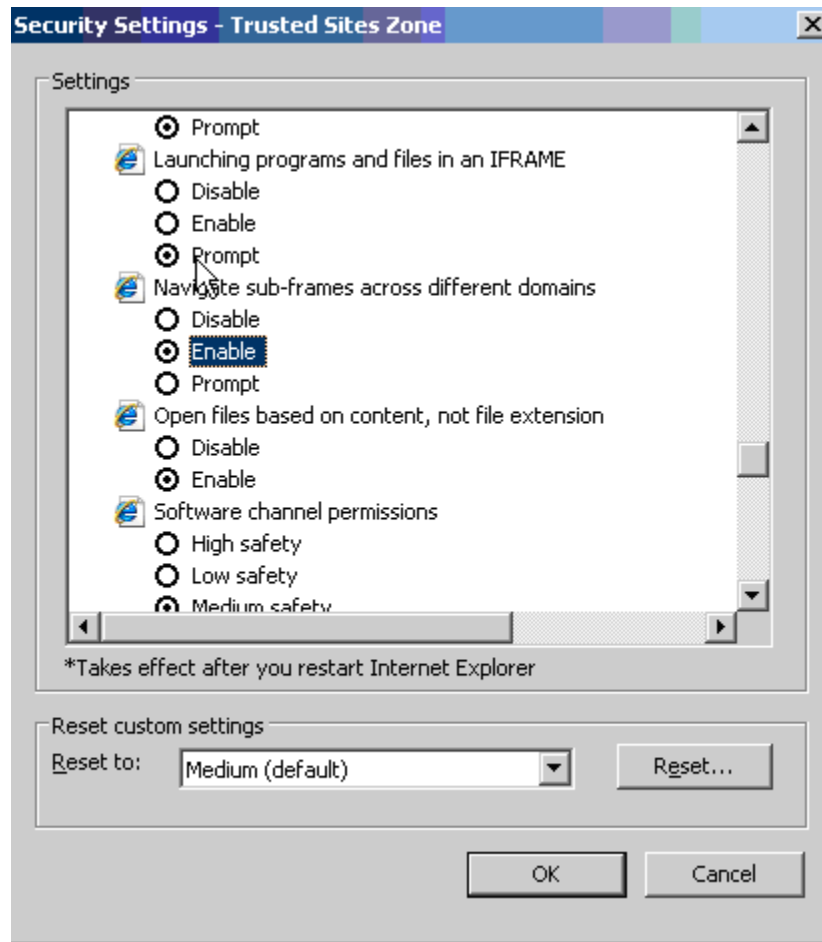
Note: Complete Step 4 only if you are using Internet Explorer Version 7.0.

4. Change the Custom Level security settings in Internet Explorer 7.0.

a. Double-click  at the bottom of your browser window to open **Internet Security Properties**.



- b. Click  to open the **Security Settings - Trusted Sites** window.
- c. Scroll to **Navigate sub-frames across different domains**.
- d. Select **Enable**.



e. Click .

f. Click .

g. Click .